

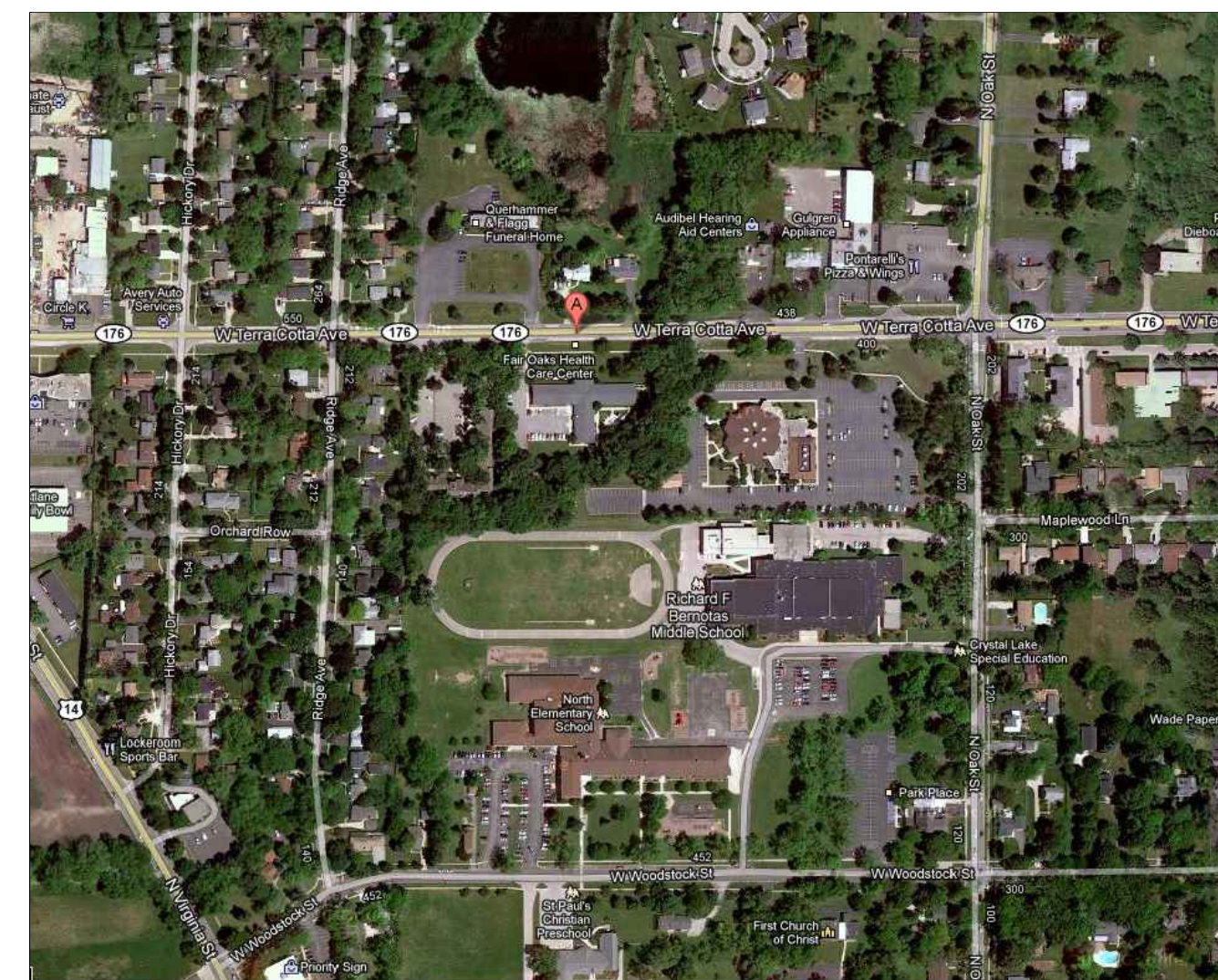
# WISH - Fair Oaks Health Center Rehabilitation Addition and Remodel

471 West Terra Cotta Avenue  
Crystal Lake, IL. 60014

## Index of Drawings

TITLE SHEET	
<b>CIVIL</b>	
C1	COVER SHEET
C2	PROJECT SPECIFICATIONS
C3	DEMOLITION PLAN
C4	DIMENSION PLAN
C5	UTILITY PLAN
C6	SANITARY SERVICE PLAN AND PROFILE
C7	GRADING PLAN
C8	STORMWATER MANAGEMENT PLAN
C9	SEDIMENT AND EROSION CONTROL PLAN
C10	SEDIMENT AND EROSION CONTROL SPECS
C11	STANDARD DETAILS
C12	STANDARD DETAILS
C13	STANDARD DETAILS
C14	STANDARD DETAILS
<b>LANDSCAPE</b>	
L1	LANDSCAPE PLAN
<b>ARCHITECTURAL</b>	
LS1.1	LIFE SAFETY PLAN
A0.1	TRASH ENCLOSURE PLAN AND SECTION
A0.2	TREE PRESERVATION PLAN
A1.0	SYMBOLS ABBREVIATIONS AND NOTES
A1.1	UL ASSEMBLIES
AP1.1	ARCHITECTURAL PHASING PLAN
AD1.1.0	ARCHITECTURAL DEMOLITION PLAN
AD1.1.1	PARTIAL DEMOLITION PLAN
A1.1.0	OVERALL FLOOR PLAN
A1.1.1	PARTIAL FLOOR PLAN - EXISTING BUILDING
A1.1.2	PARTIAL FLOOR PLAN - NEW ADDITION
A1.1.3	ENLARGED PLANS
A1.1.4	PARTIAL PLANS AND DETAILS
A2.1.0	OVERALL ROOF PLAN AND DETAILS
A2.1.1	PARTIAL ROOF PLAN AND DETAILS
A3.1	EXTERIOR ELEVATIONS
A3.2	EXTERIOR ELEVATIONS
A4.1	BUILDING SECTIONS
A4.2	BUILDING SECTIONS
A5.1	WALL SECTIONS
A5.2	WALL SECTIONS
A7.1	DOOR SCHEDULES AND DOOR AND WINDOW ELEVATIONS
A7.2	ROOM FINISH SCHEDULE AND DOOR AND WINDOW DETAILS
A7.3	DOOR AND WINDOW DETAILS
A8.1	STANDARD MOUNTING HEIGHTS AND INTERIOR DETAILS
A8.2	INTERIOR ELEVATIONS
A8.3	INTERIOR ELEVATIONS
A8.4	INTERIOR ELEVATIONS
A9.1	REFLECTED CEILING PLAN
A9.1.1	PARTIAL REFLECTED CEILING PLAN - EXISTING BUILDING
A9.1.2	PARTIAL REFLECTED CEILING PLAN - NEW ADDITION
<b>INTERIOR DESIGN</b>	
ID002	MATERIALS LEGEND
ID002a	MATERIALS LEGEND
ID003	ROOM FINISH SCHEDULE
ID200	FLOORING PLANS - ADDITION
ID201	FLOORING PLANS - EXISTING
<b>STRUCTURAL</b>	
S000	GENERAL NOTES AND SCHEDULES
S001	SCHEDULES
S100	FOUNDATION PLAN
S200	ROOF FRAMING PLAN
S300	FOUNDATION DETAILS
S400	FRAMING DETAILS
S401	FRAMING DETAILS
<b>MECHANICAL</b>	
M000	MECHANICAL NOTES AND LEGENDS
M001	MECHANICAL SPECIFICATIONS
M101	MECHANICAL FLOOR PLAN - DEMOLITION
M201	MECHANICAL FLOOR PLAN - EXISTING
M202	MECHANICAL FLOOR PLAN - ADDITION
M300	MECHANICAL SCHEDULES
M301	MECHANICAL SCHEDULES AND NOTES
<b>PLUMBING</b>	
P000	PLUMBING NOTES AND LEGENDS
P200	BASEMENT PLUMBING PLANS
P201	SANITARY AND VENT PLUMBING PLAN - EXISTING
P202	SANITARY AND VENT PLUMBING PLAN - ADDITION
P203	DOMESTIC WATER PLUMBING PLAN - EXISTING
P204	DOMESTIC WATER PLUMBING PLAN - ADDITION
P300	PLUMBING SCHEDULES
P400	SANITARY AND VENT PLUMBING RISER DIAGRAM
P401	DOMESTIC WATER PLUMBING RISER DIAGRAM
P500	PLUMBING DETAILS
<b>FIRE PROTECTION</b>	
F000	FIRE PROTECTION CRITERIA
F201	FIRE PROTECTION PLAN - EXISTING
F202	FIRE PROTECTION PLAN - ADDITION
<b>ELECTRICAL</b>	
E000	ELECTRICAL SYMBOLS AND ABBREVIATIONS
E001	ELECTRICAL NOTES AND SPECIFICATIONS
E100	ELECTRICAL SITE PLAN
E101	ELECTRICAL PHOTOMETRIC PLAN
E200	ELECTRICAL POWER PLAN - EXISTING
E201	ELECTRICAL POWER PLAN - ADDITION
E202	ELECTRICAL LIGHTING PLAN - EXISTING
E203	ELECTRICAL LIGHTING PLAN - ADDITION
E300	ELECTRICAL SCHEDULES
E301	ELECTRICAL SCHEDULES
E302	ELECTRICAL SCHEDULES
E400	ELECTRICAL POWER DISTRIBUTION ONE-LINE DIAGRAM
E500	ELECTRICAL DETAILS

## Location Map



## Applicable Codes

2006 INTERNATIONAL BUILDING CODE  
2006 INTERNATIONAL FIRE CODE  
2006 INTERNATIONAL MECHANICAL CODE  
2006 INTERNATIONAL FUEL GAS CODE  
2006 INTERNATIONAL PROPERTY MAINTENANCE CODE  
2004 ILLINOIS PLUMBING CODE  
2005 NATIONAL ELECTRIC CODE  
2009 INTERNATIONAL ENERGY CONSERVATION CODE  
1997 ILLINOIS ACCESSIBILITY CODE  
2000 NFPA 101 LIFE SAFETY CODE.

## Professional Registrations

	<p>THE PORTION OF THIS TECHNICAL SUBMISSION DESCRIBED BELOW WAS PREPARED BY ME OR UNDER MY DIRECT PERSONAL SUPERVISION. I AM A DULY LICENSED ARCHITECT/ENGINEER UNDER THE LAWS OF THE STATE OF ILLINOIS.</p> <p>SIGNATURE: _____</p> <p>NAME: _____</p> <p>DATE: _____</p> <p>LICENSE RENEWAL DATE: _____</p> <p>PAGES OR DIVISIONS COVERED: _____</p>		<p>THE PORTION OF THIS TECHNICAL SUBMISSION DESCRIBED BELOW WAS PREPARED BY ME OR UNDER MY DIRECT PERSONAL SUPERVISION. I AM A DULY LICENSED ARCHITECT/ENGINEER UNDER THE LAWS OF THE STATE OF ILLINOIS.</p> <p>SIGNATURE: _____</p> <p>NAME: _____</p> <p>DATE: _____</p> <p>LICENSE RENEWAL DATE: _____</p> <p>PAGES OR DIVISIONS COVERED: _____</p>
	<p>THE PORTION OF THIS TECHNICAL SUBMISSION DESCRIBED BELOW WAS PREPARED BY ME OR UNDER MY DIRECT PERSONAL SUPERVISION. I AM A DULY LICENSED ARCHITECT/ENGINEER UNDER THE LAWS OF THE STATE OF ILLINOIS.</p> <p>SIGNATURE: _____</p> <p>NAME: _____</p> <p>DATE: _____</p> <p>LICENSE RENEWAL DATE: _____</p> <p>PAGES OR DIVISIONS COVERED: _____</p>		<p>THE PORTION OF THIS TECHNICAL SUBMISSION DESCRIBED BELOW WAS PREPARED BY ME OR UNDER MY DIRECT PERSONAL SUPERVISION. I AM A DULY LICENSED ARCHITECT/ENGINEER UNDER THE LAWS OF THE STATE OF ILLINOIS.</p> <p>SIGNATURE: _____</p> <p>NAME: _____</p> <p>DATE: _____</p> <p>LICENSE RENEWAL DATE: _____</p> <p>PAGES OR DIVISIONS COVERED: _____</p>