

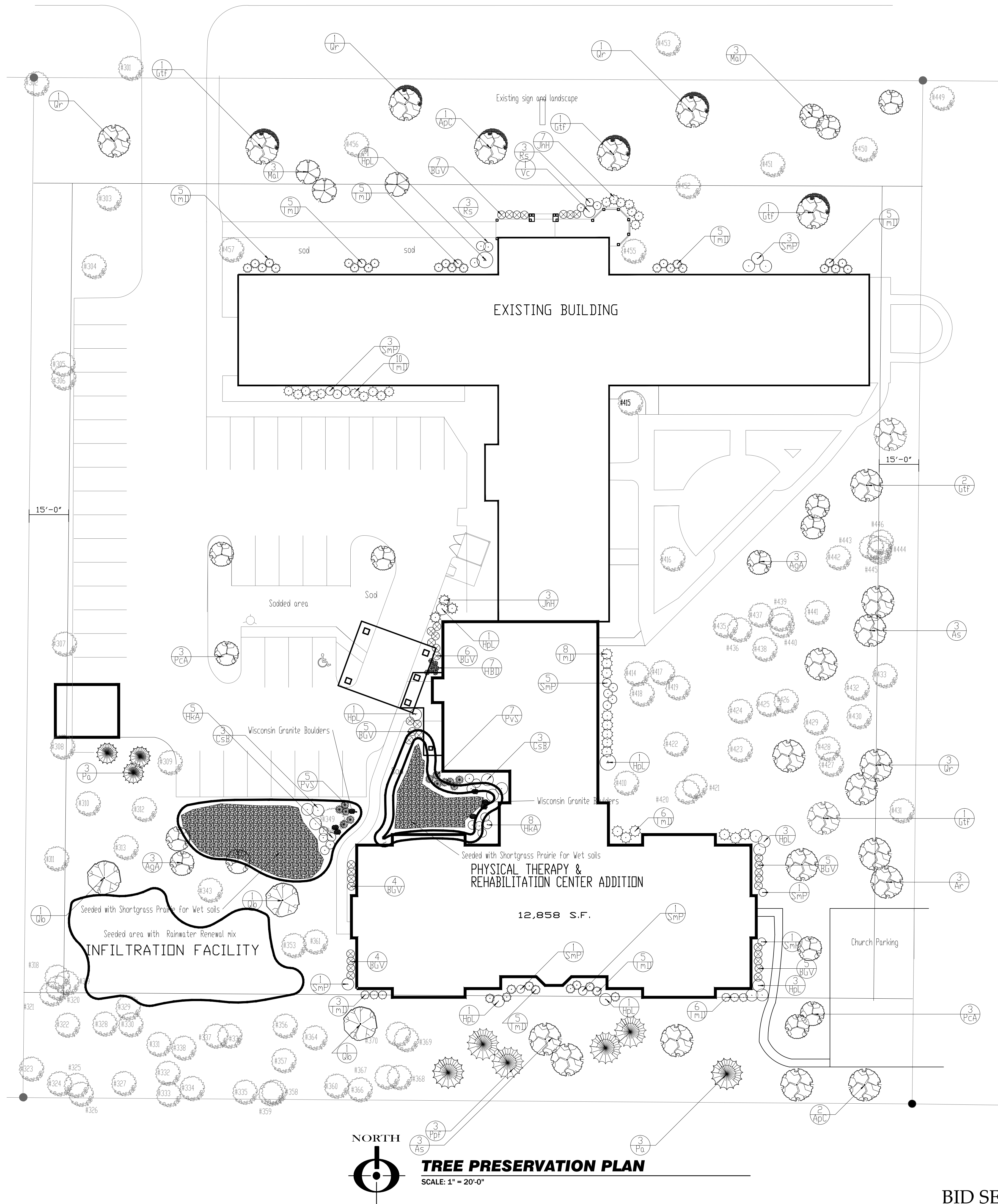
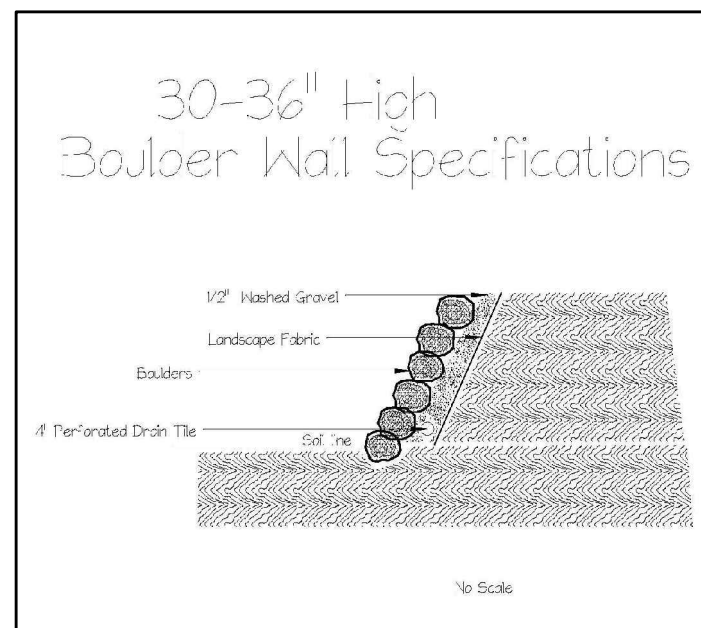
Key	Qty	Botanical Name	Common Name	Size/Condition
<b>Trees</b>				
Mal	6	Malus x 'Adams'	ADAMS FLOWERING CRAB	0 2.5'
PcA	6	Pyrus calleryana 'Autumn Blaze'	AUTUMN BLAZE CALLERY PEAR	0 2.5'
AqA	6	Amelanchier x grandiflora 'Autumn Brilliance'	AUTUMN BRILLIANCE APPLE SERVICEBERRY	0 6'
PpF	3	Picea pungens f. glauca	COLORADO BLUE SPRUCE	0 6'
ApC	3	Acer platanoides 'Crimson King'	CRIMSON KING MAPLE	0 2.5'
Qr	6	Quercus rubra	NORTHERN RED OAK	0 2.5'
Pa	6	Picea abies	NORWAY SPRUCE	0 6'
Ar	3	Acer rubrum	RED MAPLE	0 2.5'
GtF	6	Gleditsia triacanthos f. inermis 'Shademaster'	SHADEMASTER THORNLESS HONEY LOCUST	0 2.5'
As	6	Acer saccharum	SUGAR MAPLE	0 2.5'
Qb	3	Quercus bicolor	SWAMP WHITE OAK	0 2.5'
<b>Shrubs</b>				
HkA	13	Hypericum kalmianum 'Ames'	AMES KALM ST. JOHNSWORT	0 18"
Rs	6	Rhododendron Stewartianum	AZALEA	0 18"
CsB	6	Cornus stolonifera 'Bailey'	BAILEY DOGWOOD	0 2.5'
TmD	68	Taxus x media 'Densiformis'	DENSIFORMIS YEW	0 18"
Vc	1	Viburnum carlesii	FRAGRANT VIBURNUM	0 2.5'
BGV	36	Buxus 'Green Velvet'	GREEN VELVET BOXWOOD	0 18"
JhH	10	Juniperus horizontalis 'Hughes'	HUGHES CREEPING JUNIPER	0 18"
HpL	12	Hydrangea paniculata 'Limelight'	LIMELIGHT HYBRID HYDRANGEA	0 18"
SmP	16	Syringa meyeri 'Palibin'	PALIBIN DWARF LILAC	0 2.5'
<b>Ornamental Grasses</b>				
PvS	12	Panicum virgatum 'Shenandoah'	SHENANDOAH RED SWITCH GRASS	0 5gal
<b>Perennials and Annuals</b>				
HBD	7	Hosta 'Big Daddy'	BIG DADDY HOSTA	0 1gal

### Notes

\* Rain garden areas seeded in mixes from Agrecol Evansville WI

Front gardens done in Shortgrass Prairie for Wet soils Mix  
 Bigger garden done in Flood Basin Rainwater Renewal Mix  
 (Rate... 10lbs/Acre)

\* All Shrubs in beds with 3" shredded bark mulch



By  
 Countryside Flowershop and Nursery  
 5301 Terra Cotta Ave.  
 Crystal Lake, IL

NORTH  
**TREE PRESERVATION PLAN**  
 SCALE: 1" = 20'-0"

### REVISIONS

NO.	DATE	DESCRIPTION

COPYRIGHT © COMMUNITY LIVING SOLUTIONS, LLC 2009. ALL RIGHTS RESERVED. THESE DRAWINGS ARE THE PROPERTY OF COMMUNITY LIVING SOLUTIONS, LLC. THESE DRAWINGS, IN PART OR IN WHOLE, ARE NOT TO BE REPRODUCED, COPIED OR TRANSMITTED IN ANY FORM OR BY ANY MEANS WITHOUT THE WRITTEN PERMISSION FROM COMMUNITY LIVING SOLUTIONS, LLC. THE PARTY POSSESSING THESE DRAWINGS, WHETHER IN PAPER OR ELECTRONIC DATA FORMAT, AGREES TO INDEMNIFY, DEFEND AND HOLD HARMLESS COMMUNITY LIVING SOLUTIONS, LLC FROM AND AGAINST ALL DAMAGES, LIABILITY OR COST INCLUDING ATTORNEY'S FEES AND COSTS OF DEFENSE ARISING FROM CHANGES OR ALTERATIONS BY ANYONE OTHER THAN COMMUNITY LIVING SOLUTIONS, LLC TO THESE DRAWINGS OR DATA WITHOUT THE PRIOR WRITTEN CONSENT FROM COMMUNITY LIVING SOLUTIONS, LLC.

**COMMUNITY LIVING SOLUTIONS**  
 Expert Knowledge • Enlightening Results  
 2801 E. ENTERPRISE AVE., SUITE 202  
 APPLETON, WISCONSIN 54913 P 920.969.9344 - F 920.969.9345 COMMUNITYLIVINGSOLUTIONS.COM

REHABILITATION CENTER ADDITION TO:

**WISH - FAIR OAKS**  
 471 W. TERRA COTTA AVE.  
 CRYSTAL LAKE, ILLINOIS

PROJECT  
**11-115**

DATE  
**01-11-12**

SHEET  
**L1**

BID SET